

DESIGN GUIDELINES & STANDARDS

1

BOZEMAN, MONTANA



The guidelines also include principles for compatible new construction.

SERVICES:

- » Design Guidelines
- » Public Outreach

CLIENT:

Chris Saunders
Senior Planner
City of Bozeman

DATE:

2004

Entryway Corridor Design Guidelines

Bozeman is a community of more than 65,000 located approximately 60 miles north of Yellowstone National Park. The community is fortunate to have a strong downtown with a rich architectural history, and it wants to respect those design traditions in developing the city's entryway corridors.

The City engaged Winter & Company to update their existing design guidelines for the entryways. The plan applies to all specially designated commercial corridors within the city of Bozeman. Some are older areas where development patterns are established and the adjoining neighborhoods are a part of the design context. Others are newer locations where character is emerging and natural resources are an important part of the area. In each case, the character and functional qualities of each area can greatly enhance the community. These corridors also serve as key entry routes into the core of the city and set expectations for the quality of development downtown. For these reasons, the City seeks to assure that development in the commercial corridors will result in dynamic, attractive neighborhoods and also will reflect the overall goals for high quality design. It is in this spirit that the design guidelines were produced.



A series of architectural models show the desired mass, scale and siting of potential infill projects in the applicable corridor.

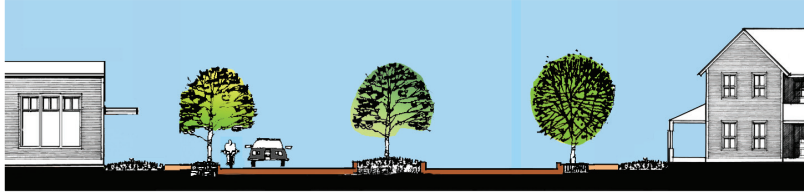


Winter & Company

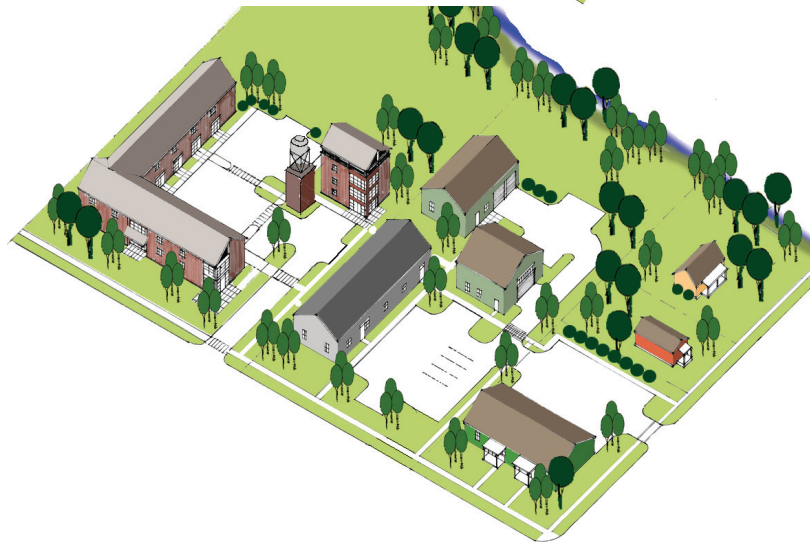
www.winterandcompany.net

DESIGN GUIDELINES & STANDARDS

BOZEMAN, MONTANA



Proposed street section design standards for the 7th Street Corridor



The architectural models show the desired mass, scale and siting of potential infill projects and streetscape enhancements for two entryway corridors within their existing context. The top right project shows a traditional commercial strip context and the lower right shows the rural context .



The guidelines also address location and desired character for outdoor plazas.



Examples of compatible building materials and details are included in the guidelines to help illustrate their application.

