

# DESIGN GUIDELINES

1

CAMDEN, SOUTH CAROLINA



## Residential District Guidelines

Established in 1733, Camden is the oldest inland city in South Carolina. It was the site of Revolutionary War and Civil War engagements, and was an important flour mill town and cotton center in the 19th Century. Around the turn of the century, it became popular as a wintertime retreat for industrialists, artists and political leaders from the Northeast. This rich, diverse history is reflected in a wide-ranging collection of historic resources, which include large estates, monumental town houses, vernacular cottages and civic buildings.



In recognition of this distinctive heritage, the city manages a preservation program to protect its historic resources. It had used design guidelines to advise property owner about appropriate treatments of historic resources and to assist the local preservation commission in its decision-making, but recognized that an update was needed to respond to new issues and emerging trends.



Winter & Company recently completed updating the Design Guidelines for the city's Historic Overlay District. They are intended to assist property owners in developing projects in the district that will preserve historic resources, accommodate change and maintain the character of the district. They will help clarify how best practices in preservation can be applied to a wide range of property types, and how to treat properties with varying degrees of significance. Providing additional guidance for improvements to non-contributing properties and infill construction is also a part of the assignment.



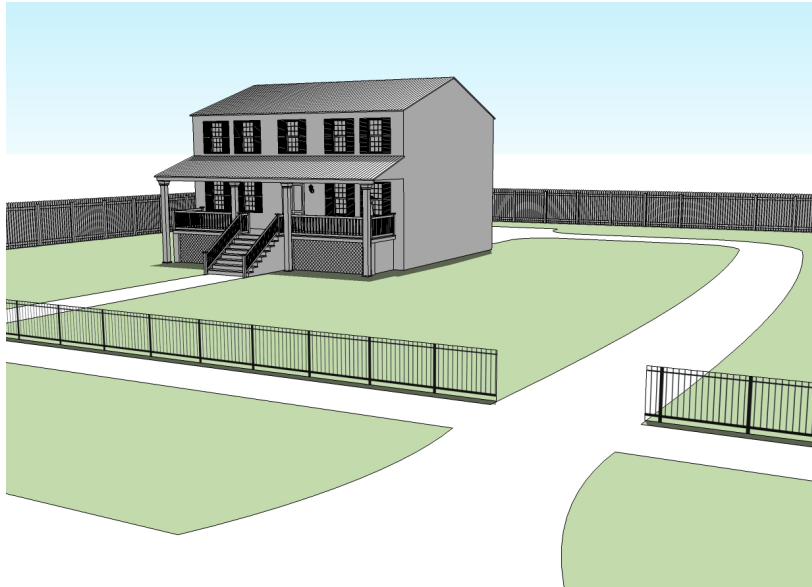
Winter & Company

[www.winterandcompany.net](http://www.winterandcompany.net)

# DESIGN GUIDELINES

2

CAMDEN, SOUTH CAROLINA



*Case study model of a prototype residence in a rural area of Camden.*

## SERVICES:

- » Guidelines for preservation of historic properties
- » Guidelines for additions to historic properties
- » Guidelines for improvements to non-contributing properties
- » Guidelines for new construction in the historic district

## CLIENT:

Shawn Putnam,  
Planning Director  
City of Camden, SC

## DATE:

2013-2014



Winter & Company

[www.winterandcompany.net](http://www.winterandcompany.net)