

# DESIGN GUIDELINES

1

MINNEAPOLIS, MINNESOTA



*An historic resource found in the St. Anthony Falls Historic District.*



*The new building to the right is an addition to the historic building (left) and follows the new design guidelines.*



*This represents one of the character areas found in the District.*

## **St. Anthony Falls Historic District Guidelines and Character Analysis**

The Falls of St. Anthony was the only major waterfall on the Mississippi River. They were harnessed to create power for what was to become the most important industrial milling complex in the nation. Although the milling industry is essentially a memory along the waterfront, some of the buildings and transportation infrastructure remain.

Dramatic changes have occurred in the three decades since the Minneapolis Heritage Preservation Commission adopted the current St. Anthony Falls Historic District Design Guidelines. Access to and interaction with the falls and river have evolved, infrastructure has been added and redevelopment has blossomed. These changes highlight the historic importance of the area as a diverse but unified cultural environment.

New design guidelines address the many features that make up the essential character of the district, balancing objectives for preservation, restoration and rehabilitation with the opportunity for new, higher density development. They address the complete cultural landscape of the St. Anthony Falls Historic District to steward its historic resources into the twenty-first century.



Winter & Company

[www.winterandcompany.net](http://www.winterandcompany.net)

# DESIGN GUIDELINES

2

## MINNEAPOLIS, MINNESOTA

New design guidelines for St. Anthony Falls address the following elements:

- » Neighborhood character areas (Industrial Riverfront, Historic Warehouse Area, Historic Commercial Area, Mixed use Commercial Area, Multifamily Neighborhood, Natural Riverfront)
- » Archaeological sites such as the remains of the original Hennepin Avenue suspension bridges
- » Transportation infrastructure such as streets, canals, rail lines and the Stone Arch Bridge
- » Natural features and open space along the Mississippi River, such as the West River Parkway
- » New construction

### SERVICES:

- » Analysis of existing conditions
- » Community outreach
- » Design guidelines
- » Cultural resources education

### CLIENT:

Brian Schaffer, Principal City Planner  
City of Minneapolis

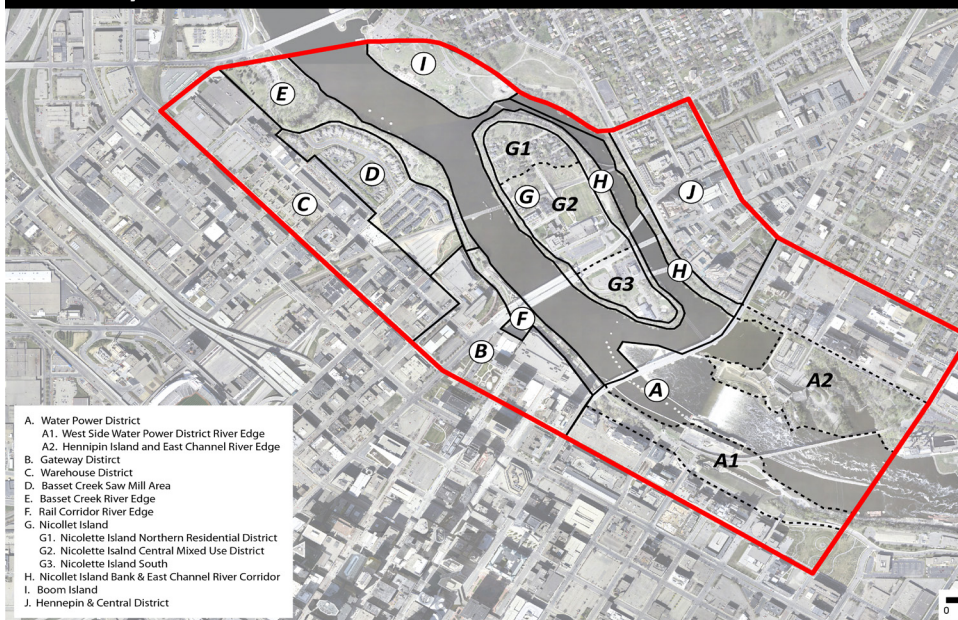
### DATE:

2011-2012



*In a series of interactive workshops, participants offered opinions on which features of the project area are desirable and should be enhanced.*

### St Anthony Falls Historic District: Character Areas



*New infill project following the design guidelines.*



Winter & Company

[www.winterandcompany.net](http://www.winterandcompany.net)